

shorehire.

Shore 1000



Shore 1000



A heavy-duty propping system designed for high loads.

The main strength of this system is its rigid and robust construction and versatility which make it ideally suited for heavy-duty back propping, temporary bridge propping, heavy-duty towers and falsework.

Shore 1000 can be configured for a huge variety of applications.

Shore 1000 can be used in conjunction with Shore 100. This allows a wide variety of towers and centres of props to be designed using the Shore 1000, Shore 400 and Shore 100 minimising the need for fabricated structures.

Features

- Back Propping
- Façade Retention
- Heavy-duty Falsework
- Bridge Propping
- Access Platforms
- Heavy Slab Propping

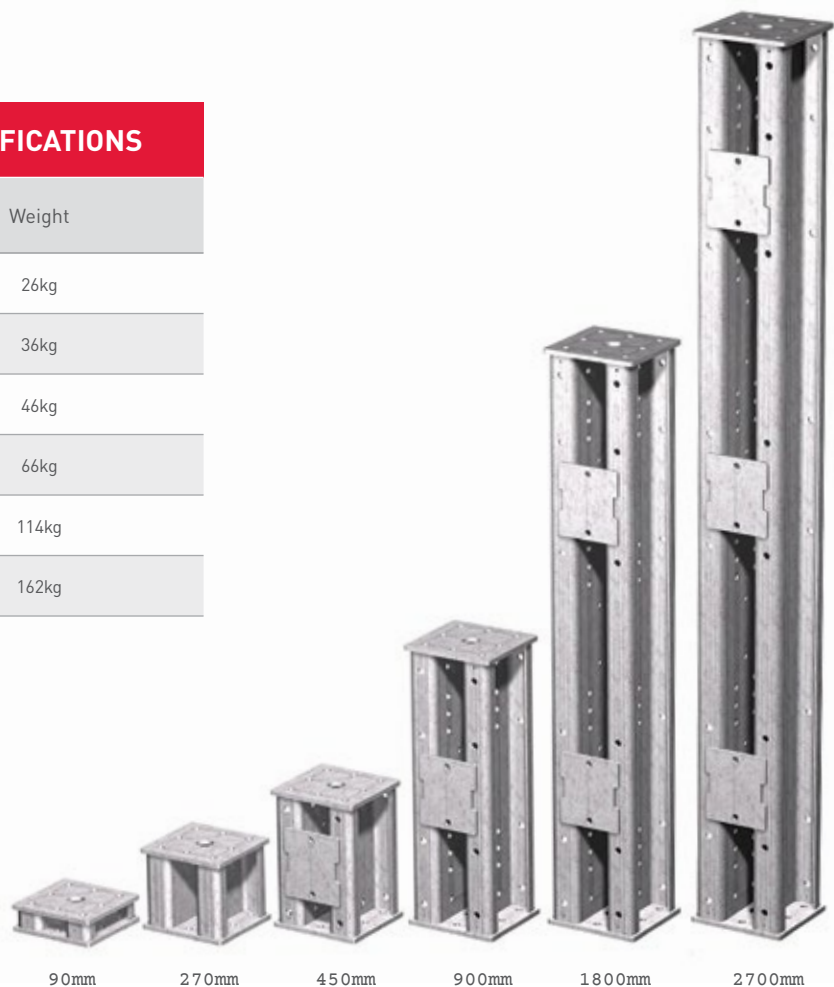
Shore 1000



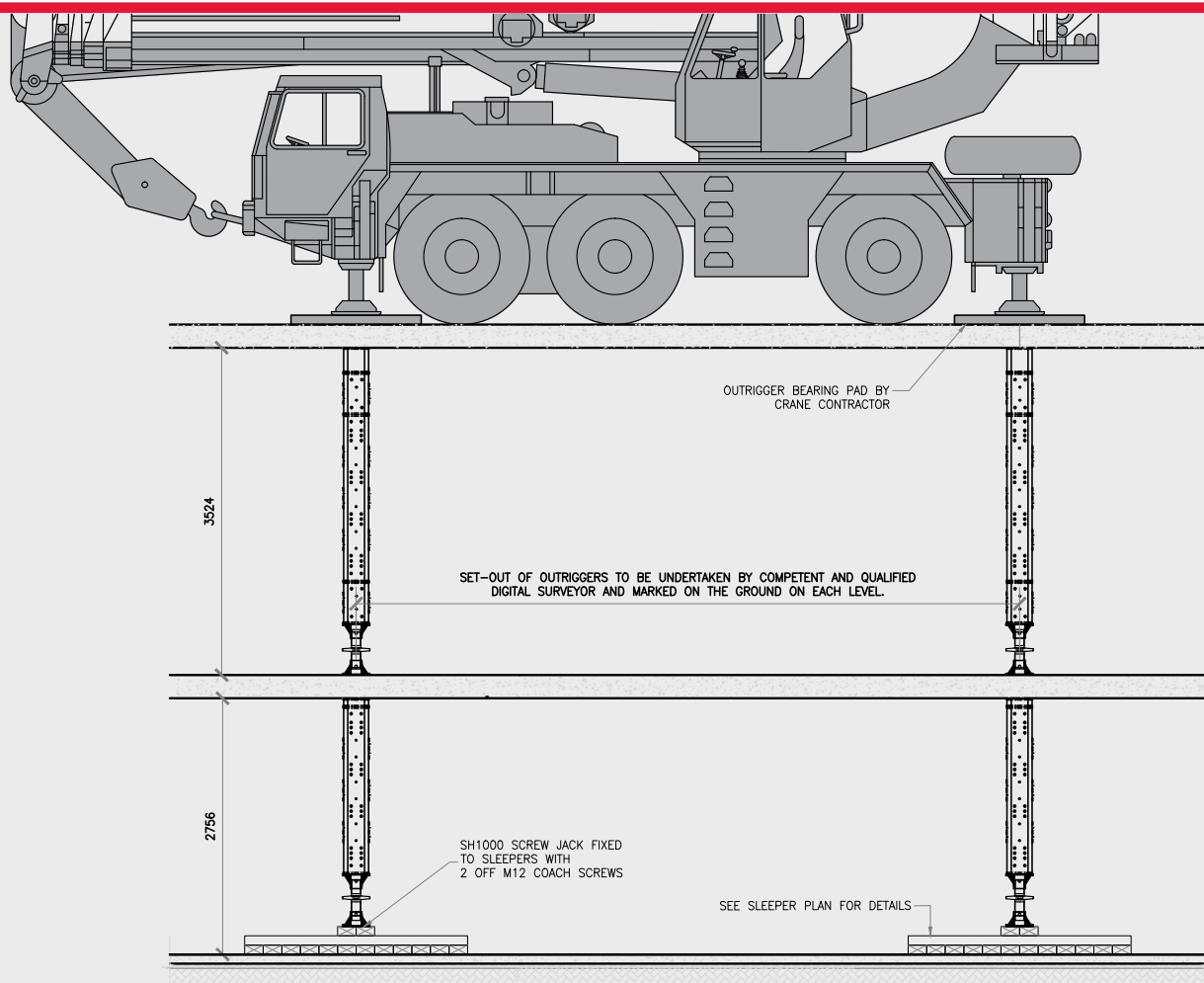
Robust construction and galvanised, the Shore 1000 is built tough.

SHORE 1000 SECTION SPECIFICATIONS

Description	Weight
90mm Section	26kg
270mm Section	36kg
450mm Section	46kg
900mm Section	66kg
1800mm Section	114kg
2700mm Section	162kg



Shore 1000

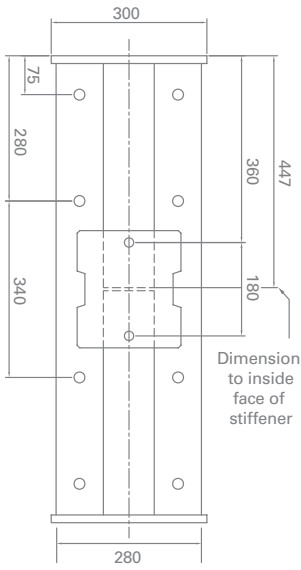


- Design and Methodology
- Installation
- Certification/Signoff

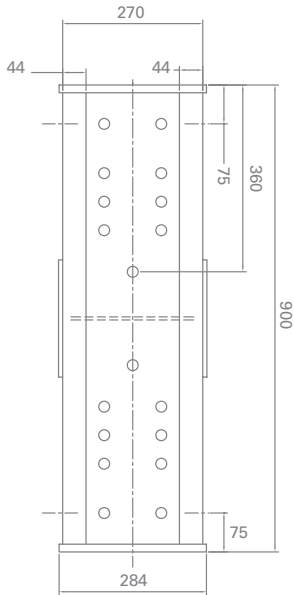


Shore 1000

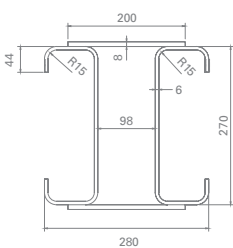
Flange Detail



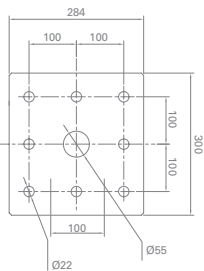
Web Detail



Section Detail



End Detail



SHORE 1000 COMPONENTS WITH BASE JACK

Min-Max Height (mm)	Kg	Shore 1000 Jack (410-620mm)	Number of Intermediate Beams Required					
			90mm	270mm	450mm	900mm	1800mm	2700mm
410 – 620	54kg	1						
500 – 710	79kg	1	1					
680 – 890	89kg	1		1				
860 – 1070	99kg	1			1			
950 – 1160	124kg	1	1		1			
1130 – 1340	134kg	1		1	1			
1220 – 1430	159kg	1	1	1	1			
1310 – 1520	119kg	1				1		
1400 – 1610	144kg	1	1			1		
1580 – 1790	154kg	1		1		1		
1670 – 1880	179kg	1	1	1		1		
1760 – 1970	164kg	1			1	1		
1940 – 2150	214kg	1	1	2		1		
2120 – 2330	224kg	1	1	1	1	1		
2300 – 2510	191kg	1	1				1	
2480 – 2690	201kg	1		1			1	
2660 – 2870	211kg	1			1		1	
2840 – 3050	261kg	1	1	2			1	
3020 – 3230	271kg	1	1	1	1		1	
3200 – 3410	239kg	1	1					1
3380 – 3590	249kg	1		1				1
3560 – 3770	259kg	1			1			1
3740 – 3950	309kg	1	2		1			1
3920 – 4130	319kg	1	1	1	1			1
4100 – 4310	304kg	1	1			1		1
4280 – 4490	294kg	1		1				1
4460 – 4670	324kg	1			1	1		1
4640 – 4850	374kg	1	1	2		1		1
4820 – 5030	384kg	1		3		1		1
5000 – 5210	351kg	1	1				1	1
5180 – 5390	361kg	1		1			1	1
5360 – 5570	371kg	1			1		1	1
5540 – 5750	396kg	1	2		1		1	1
5720 – 5930	431kg	1	1	1	1		1	1
5900 – 6110	399kg	1	1					2
6080 – 6290	409kg	1		1				2
6260 – 6470	419kg	1			1			2
6440 – 6650	469kg	1	2		1			2
6620 – 6830	479kg	1		3				2
6800 – 7010	464kg	1	1			1		2
6980 – 7190	474kg	1		1		1		2
7160 – 7370	484kg	1			1	1		2
7340 – 7550	534kg	1	1	2		1		2
7520 – 7730	544kg	1	1	1	1	1		2
7700 – 7910	511kg	1	1				1	2
7880 – 8090	521kg	1		1			1	2
8060 – 8270	531kg	1			1		1	2
8240 – 8450	581kg	1	2		1		1	2
8420 – 8630	591kg	1	1	1	1		1	2
8600 – 8810	559kg	1	1					3
8780 – 8990	569kg	1		1				3
8960 – 9170	579kg	1			1			3
9140 – 9350	629kg	1	2		1			3
9320 – 9530	639kg	1	1	1	1			3
9500 – 9710	649kg	1		2	1			3
9680 – 9890	634kg	1		1		1		3
9860 – 10070	644kg	1			1	1		3
10040 – 10250	694kg	1	2		1	1		3
10220 – 10430	704kg	1	1	1	1	1		3
10400 – 10610	671kg	1	1				1	3
10580 – 10790	681kg	1		1			1	3
10760 – 10970	691kg	1			1		1	3
10940 – 11150	741kg	1	2		1		1	3
11120 – 11330	751kg	1	1	1	1		1	3
11300 – 11510	736kg	1	1			1	1	3

Shore 1000

The best fit for a variety of projects

An extensive range of ancillary equipment is available. Rocking heads used for raking shores up to 45 degrees, needle beams, grillage beams and sleepers used as base pads.

Shore 1000 is versatile, heavy-duty support systems which can be used in either single or multiple leg support configurations.



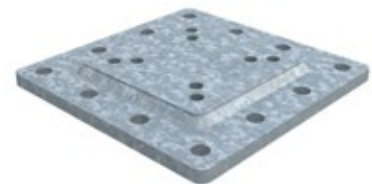
Screw Jack



Rocking Head



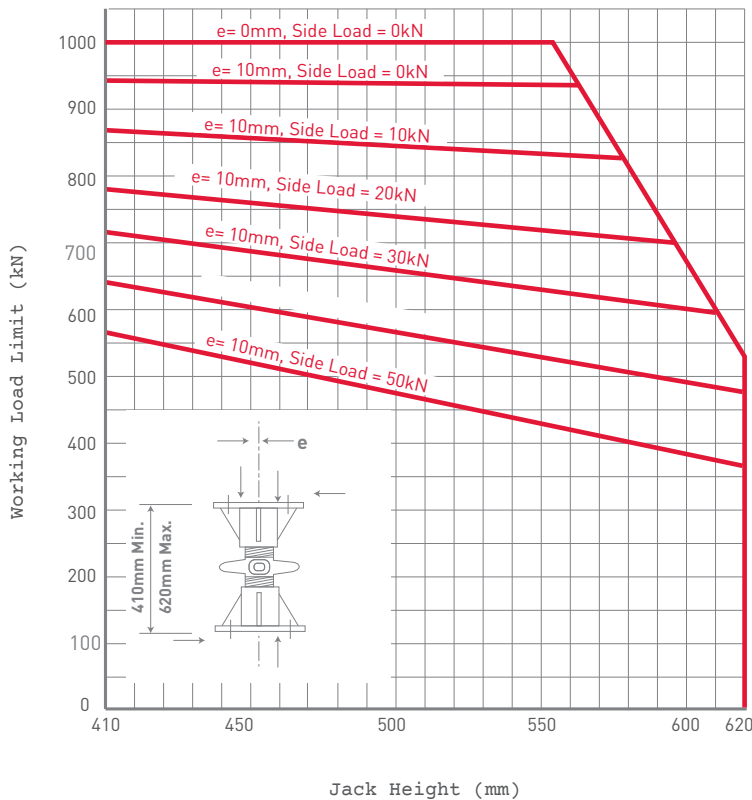
Needle Beam Fixing Clamp



Transfer Fixing Plate

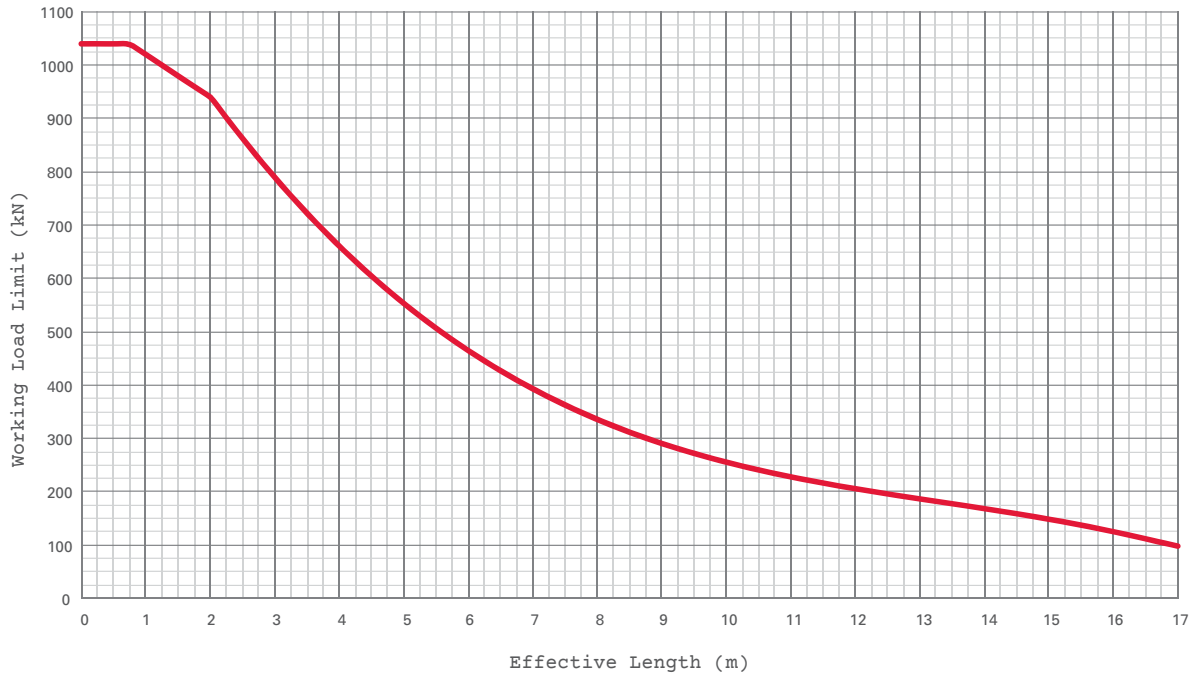
SHORE 1000 ACCESSORIES SPECIFICATION

Description	Weight
Screw Jack (410-620mm)	60kg
Rocking Head	50kg
Needle Beam Fixing Clamp	18.3kg
Transfer Fixing Plate	48.5kg



Shore 1000

Shore 1000 Vertical Working Load Limit



The Vertical working load limit capacity chart is based on the following principles of design:

- Shore 1000 jack is positioned at the base and both ends are laterally restrained
- The working load limit values are the limit state design capacity values divided by a load factor of 1.5
- An eccentricity of axial load of L/200 has been applied around the minor axis
- All assembly bolts are fully tensioned
- Intermediate capacities for various effective lengths can be interpolated from the chart

Note: For design parameters outside the above scope, consultation should be made with Shore Hire Engineering Services.

SHORE 1000 PROPERTIES

Cross Sectional Area	5821mm ²	Elastic Section Modulus in y-direction (Z _{yy})	303.1 x 10 ³ mm ³
Moment of Inertia in x-direction (I _{xx})	59.6 x 10 ⁶ mm ⁴	Plastic Section Modulus in x-direction (S _{xx})	538 x 10 ³ mm ³
Moment of Inertia in y-direction (I _{yy})	42.4 x 10 ⁶ mm ⁴	Plastic Section Modulus in y-direction (S _{yy})	457 x 10 ³ mm ³
Radius of Gyration in x-direction (r _{xx})	101.2mm	Young's Modulus of Elasticity, E	200 x 10 ³ Mpa
Radius of Gyration in y-direction (r _{yy})	85.4mm	Minimum Yield Stress of Prop Material (f _y)	345Mpa
Elastic Section Modulus in x-direction (Z _{xx})	441.5 x 10 ³ mm ³		

SYDNEY BRANCH

360 Edgar Street
Condell Park NSW 2200
sydney@shorehire.com.au
T: 02 8708 1200

NEWCASTLE BRANCH

18 Yilen Close
Beresfield NSW 2322
newcastle@shorehire.com.au
T: 02 4918 2500

MELBOURNE BRANCH

1 Oban Court
Laverton North VIC 3026
melbourne@shorehire.com.au
T: 03 9344 6400

BRISBANE BRANCH

11 Angel Road
Stapylton QLD 4207
brisbane@shorehire.com.au
T: 07 3080 4000

HEAD OFFICE

PO Box CP449
Condell Park NSW 2200
354 Edgar Street
Condell Park NSW 2200
accounts@shorehire.com.au
T: 02 8708 1250

1300 SHORE HIRE**shorehire.com.au****shorehire.**