

**shorehire.**

# Trishores



# Trishores



## A proven propping system

Trishore Props are a heavy load support system with capacity up to 178Kkn. The Trishore Props are best utilised when support is required at extended heights.

## Trishore Advantages

- Able to support heavy loads at considerable height
- Fine adjustment by screw jacks
- Trishores braced in groups can support exceptionally heavy loads
- Lightweight sections for easy handling

# Trishores

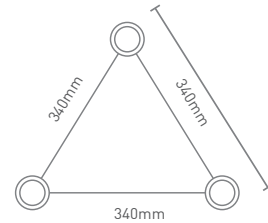
## Features

- Intermediate sections available in three different lengths
- Domed bearing plate to ensure concentric loading
- Quick action connector

## Trishore Heights



## Trishore Outside Dimensions



## Trishore Components



Base Jack



Head Jack



Flat Head Piece

## TRISHORE SECTION/COMPONENT SPECIFICATIONS

Component	Length	Weight
Intermediate Section	1250mm	28kg
Intermediate Section	1500mm	33kg
Intermediate Section	2000mm	41kg
Flat Head Piece	170mm	14kg
Base Jack	From 365–640mm	34kg
Head Jack	From 380–670mm	32kg

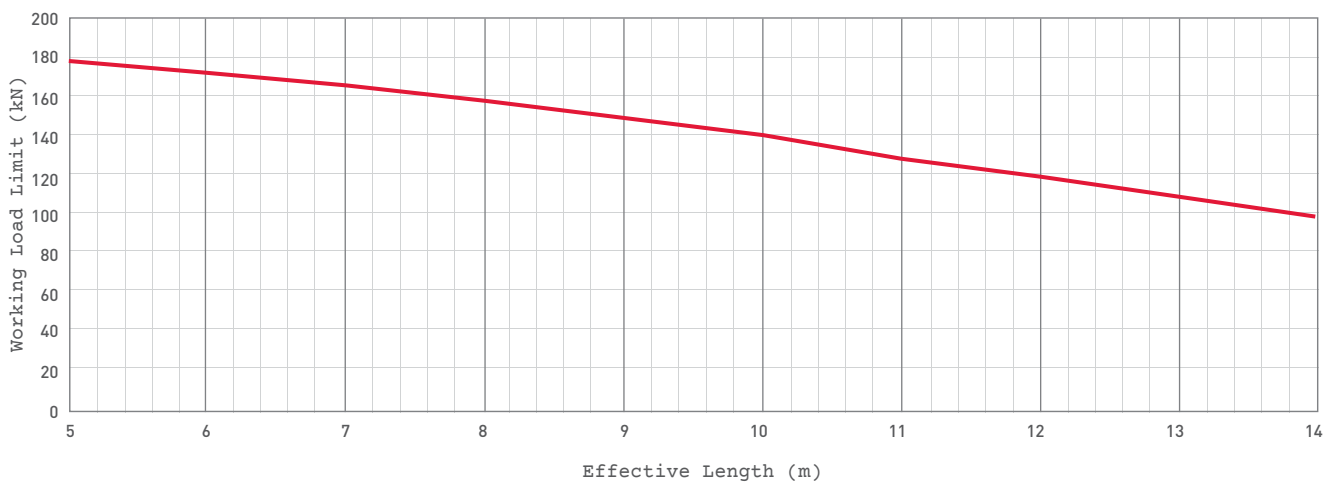
# Trishores



**Support heavy loads at considerable heights.**

The working load limit given is for a free standing prop without intermediate bracing. Prop load rating can be increased by providing adequate bracing at intermediate points (to be calculated by a qualified engineer). To be effective, the bracing must be in two directions, preferably at right angles. In every case, some cross bracing is essential for erection and stabilising against any lateral force. Bracing is to be correctly fitted to Australian Standards requirements.

Tri-Shore Vertical Working Load Limit



# Trishores

## TRISHORE SPECIFICATIONS

Overall Height of Trishore with Base Jack and Flat Head Piece		Number of Intermediate Sections Required			Overall Height of Trishore with Base Jack and Head Jack	
Metres	kg	1250	1500	2000	Metres	kg
0.54 - 0.81	48	-	-	-	1.10 - 1.30	66
1.78 - 2.06	76	1	-	-	1.19 - 2.56	94
2.03 - 2.31	80	-	1	-	2.24 - 2.81	97
2.53 - 2.81	89	-	-	1	2.74 - 3.31	107
3.03 - 3.31	104	2	-	-	3.24 - 3.81	122
3.28 - 3.56	109	1	1	-	3.49 - 4.06	127
3.53 - 3.81	113	-	2	-	3.74 - 4.31	131
3.78 - 4.07	117	1	-	1	3.99 - 4.56	135
4.03 - 4.31	122	-	1	1	4.24 - 4.81	140
4.28 - 4.56	132	3	-	-	4.49 - 5.06	150
4.53 - 4.81	130	-	-	2	4.74 - 5.31	148
4.78 - 5.06	141	1	2	-	4.99 - 5.56	159
5.03 - 5.31	145	2	-	1	5.24 - 5.81	163
5.28 - 5.56	150	1	1	1	5.49 - 6.06	168
5.53 - 5.81	154	-	2	1	5.74 - 6.31	172
5.78 - 6.06	158	1	-	2	5.99 - 6.56	177
6.03 - 6.31	163	-	1	2	6.24 - 6.81	181
6.28 - 6.56	173	3	-	1	6.49 - 7.06	191
6.53 - 6.81	171	-	-	3	6.74 - 7.31	190
6.78 - 7.06	182	1	2	1	6.99 - 7.56	200
7.03 - 7.31	186	2	-	2	7.24 - 7.81	205
7.28 - 7.56	191	1	1	2	7.49 - 8.06	209
7.53 - 7.81	195	-	2	2	7.74 - 8.31	214
7.78 - 8.06	200	1	-	3	7.99 - 8.56	218
8.03 - 8.31	204	-	1	3	8.24 - 8.81	222
8.28 - 8.56	215	3	-	2	8.49 - 9.06	233
8.53 - 8.81	213	-	-	4	8.74 - 9.31	231
8.78 - 9.06	224	1	2	2	8.99 - 9.56	242
9.03 - 9.31	228	2	-	3	9.24 - 9.81	246
9.28 - 9.56	232	1	1	3	9.49 - 10.06	251
9.53 - 9.81	236	-	2	3	9.74 - 10.31	255
9.78 - 10.06	241	1	-	4	9.99 - 10.56	269
10.03 - 10.31	245	-	1	4	10.24 - 10.81	264
10.28 - 10.56	256	3	-	3	10.49 - 11.06	273
10.53 - 10.81	254	-	-	5	10.74 - 11.31	272
10.78 - 11.06	265	1	2	3	10.99 - 11.56	283
11.03 - 11.31	269	2	-	4	11.24 - 11.81	287
11.28 - 11.56	273	1	1	4	11.49 - 13.06	292
11.53 - 11.81	278	-	2	4	11.74 - 12.31	296
11.78 - 12.06	282	1	-	5	11.99 - 12.56	300
12.03 - 12.31	286	-	1	5	12.24 - 12.81	305

**SYDNEY BRANCH**

360 Edgar Street  
Condell Park NSW 2200  
sydney@shorehire.com.au  
T: 02 8708 1200

**NEWCASTLE BRANCH**

18 Yilen Close  
Beresfield NSW 2322  
newcastle@shorehire.com.au  
T: 02 4918 2500

**MELBOURNE BRANCH**

1 Oban Court  
Laverton North VIC 3026  
melbourne@shorehire.com.au  
T: 03 9344 6400

**BRISBANE BRANCH**

11 Angel Road  
Stapylton QLD 4207  
brisbane@shorehire.com.au  
T: 07 3080 4000

**HEAD OFFICE**

PO Box CP449  
Condell Park NSW 2200  
354 Edgar Street  
Condell Park NSW 2200  
accounts@shorehire.com.au  
T: 02 8708 1250

**1300 SHORE HIRE****shorehire.com.au****shorehire.**