

PIPE TEST PLUGS



Test Plugs



Blank Plugs



Bypass Plugs

LARGE RANGE OF TEST PLUGS AVAILABLE. VARIOUS SIZES TO SUIT MOST APPLICATIONS.

Shore Hire offers a wide range of Pneumatic Test Plugs designed for various applications, including leak locating, bypassing, flow control, or pipeline testing methods using water, air, or vacuum.

Our plugs have been designed for ruggedness, durability, and flexibility, while being easy to use.

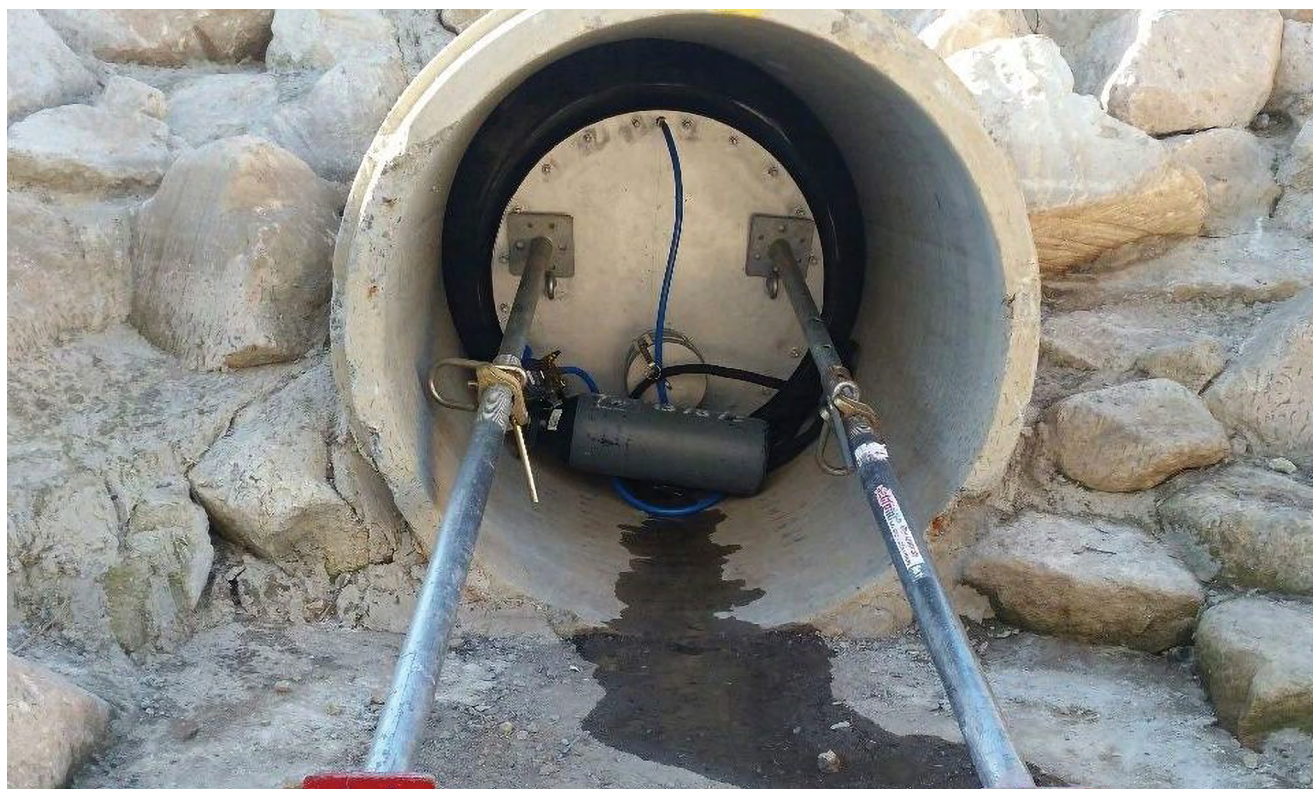
Our Test Plugs serve multiple applications, such as gravity bypassing or bypass pumping, but can also be used as a blank plug or standard testing plug.

PIPE TESTING EQUIPMENT

- Low-pressure test plugs
- Muni-ball plugs
- Leak locator plugs
- Single size bypass plugs
- Multi-size plugs

FEATURES

- Gravity bypass
- Pump over bypass
- Fully tested and compliant with Australian Standards



BLANK TEST PLUGS



**OUR PIPE TESTING PLUGS ARE SIMPLE,
EASY TO USE, AND BLANK OFF MOST PIPES.**

They are designed for applications including low-pressure testing, blocking of residential pipe systems, repair maintenance, and installation of municipal infrastructure, including storm and sanitary sewer piping systems.

BLANK PNEUMATIC PLUGS

Size Range	Diameter	Length	Weight	Required Inflation Pressure		Max Allowable Back Pressure			
						Air		Water	
				psi	bar	psi	bar	ft	m
3.5" – 4.5" 90 – 125 mm	3.5" 90 mm	5.5" 140 mm	0.67 kg	25	1.7	10	0.69	25	7.6
5.0" – 6.5" 125 – 175 mm	5.0" 125 mm	6.0" 152 mm	1.4 kg	25	1.7	10	0.69	25	7.6
7.0" – 8.5" 175 – 225 mm	7.0" 175 mm	7.5" 191 mm	2.3 kg	25	1.7	10	0.69	25	7.6
8.5" – 10.0" 225 – 265 mm	8.0" 200 mm	10.0" 254 mm	3.6 kg	20	1.4	10	0.69	25	7.6
11.0" – 12.5" 275 – 325 mm	11.0" 275 mm	12.0" 305 mm	5.6 kg	20	1.4	10	0.69	25	7.6
13.5" – 15.5" 350 – 400 mm	13.5" 350 mm	15.0" 381 mm	10.9 kg	25	1.7	10	0.69	25	7.6
16.5" – 18.5" 425 – 470 mm	16.5" 425 mm	18.0" 457 mm	15.5 kg	25	1.7	10	0.69	25	7.6
18.5" – 21.5" 475 – 550 mm	18.5" 475 mm	21.0" 533 mm	19.1 kg	20	1.4	8	0.55	20	6.1

Note: Specifications are approximate.

BYPASS PIPE TEST PLUGS

BYPASS PLUGS											
Size Range	Diameter	Length	Weight	Bypass Size	Required Inflation Pressure	Pipe Size		Max Allowable Back Pressure			
								Air		Water	
						inch	mm	psi	bar	ft	m
4.0"–8.0" 100–200mm	3.8" 97mm	22.0" 559mm	7.0lbs 3.2kg	2.0" 51mm	40psi 2.8bar	4.0	100	15	1.0	45	13.7
						6.0	150	15	1.0	40	12.2
						8.0	200	15	1.0	35	10.7
5.5"–10.5" 150–275mm	5.5" 140mm	22.0" 559mm	13.0lbs 5.9kg	3.0" 76mm	40psi 2.8bar	6.0	150	15	1.0	45	13.7
						8.0	200	15	1.0	40	12.2
						10.0	250	15	1.0	35	10.7
7.0"–12.5" 175–325mm	6.5" 165mm	22.0" 559mm	18.0lbs 8.2kg	4.0" 102mm	40psi 2.8bar	8.0	200	15	1.0	45	13.7
						10.0	250	15	1.0	40	12.2
						12.0	250	10	0.7	35	10.7
9.0"–16.0" 225–400mm	8.5" 216mm	22.0" 559mm	26.0lbs 11.8kg	6.0" 152mm	40psi 2.8bar	10.0	250	15	1.0	45	13.7
						12.0	300	15	1.0	45	13.7
						16.0	400	10	0.7	35	10.7
10.5"–18.0" 275–450mm	10.0" 254mm	22.0" 559mm	34.0lbs 15.4kg	6.0" 152mm	40psi 2.8bar	12.0	300	15	1.0	40	12.2
						15.0	375	15	1.0	35	10.7
						18.0	450	10	0.7	30	9.1
14.0"–21.0" 350–550mm	13.5" 343mm	24.0" 610mm	46.0lbs 20.9kg	6.0" 152mm	40psi 2.8bar	15.0	375	15	1.0	40	12.2
						18.0	450	15	1.0	35	10.7
						21.0	525	10	0.7	30	9.1
16.5"–24.0" 425–625mm	16.0" 406mm	24.5" 622mm	60.0lbs 27.2kg	6.0" 152mm	40psi 2.8bar	18.0	450	15	1.0	40	12.2
						21.0	525	15	1.0	35	10.7
						24.0	600	10	0.7	30	9.1
16.5"–24.0" 425–625mm	16.0" 406mm	24.5" 622mm	60.0lbs 27.2kg	Various	40psi 2.8bar	18.0	450	15	1.0	40	12.2
						21.0	525	15	1.0	35	10.7
						24.0	600	10	0.7	30	9.1
16.5"–30.0" 425–775mm	16.0" 406mm	41.0" 1041mm	95.0lbs 43.1kg	Various	40psi 2.8bar	18.0	450	15	1.0	40	12.2
						24.0	600	15	1.0	35	10.7
						30.0	750	10	0.7	30	9.1
22.0"–36.0" 550–950mm	16.0" 406mm	21.5" 546mm	130.0lbs 58.9kg	Various	40psi 2.8bar	24.0	600	15	1.0	40	12.2
						30.0	750	15	1.0	35	10.7
						36.0	900	10	0.7	30	9.1
34.0"–48.0" 850–1250mm	16.0" 406mm	33.0" 838mm	215.0lbs 97.5kg	Various	40psi 2.8bar	36.0	900	10	0.7	25	7.6
						42.0	1050	8	0.6	25	7.6
						48.0	1200	5	0.3	20	6.1
46.0"–60.0" 1150–1550mm	16.0" 406mm	45.0" 1143mm	325.0lbs 147.3kg	Various	40psi 2.8bar	48.0	1200	8	0.6	20	6.1
						54.0	1350	8	0.6	20	6.1
						60.0	1500	5	0.3	15	4.6

Note: Specifications are approximate. Other sizes available, contact us for more information.

PNEUMATIC PIPE TEST PLUGS HAVE A BYPASS TO ENABLE MULTIPLE APPLICATIONS.



PIPE TEST PLUGS

Test plugs are designed to block or bypass sewage flow, as well as conduct low-pressure sewer air tests. Our range of test plugs can also be used for both line acceptance testing and leak location testing.

DURABLE RUGGED ALUMINIUM CONSTRUCTION

Waste Water Bypass/Full Flow Through Sewer Plugs will divert flow during repair or rehabilitation work while keeping your sewer line in service and your work area dry, without the need for continuous plumbing.

If required, these plugs can also be used as blank plugs by capping off the bypass with a threaded cap or camlock fitting.

PIPE TEST PLUG USES

- Waste water bypass
- Full flow through sewer plug
- Low pressure pipe testing
- Line acceptance testing
- Leak location
- Blank off pipelines
- Vacuum testing

HIGH PRESSURE TEST PLUGS

HIGH PRESSURE TEST PLUGS – 150 PSI TEST

Size Range	Diameter	Length	Required Inflation Pressure	Max Allowable Back Pressure
3.8"–4.5" 100–125mm	3.5" 89mm	18.0" 457mm	200psi 13.8bar	150psi 10.3bar
5.5"–6.5" 150–175mm	5.0" 127mm	18.0" 457mm	200psi 13.8bar	150psi 10.3bar
7.0"–8.5" 175–225mm	6.5" 165mm	18.0" 457mm	200psi 13.8bar	150psi 10.3bar
9.0"–10.5" 225–275mm	8.0" 203mm	18.0" 457mm	200psi 13.8bar	150psi 10.3bar
11.1"–12.5" 275–325mm	10.0" 254mm	18.0" 457mm	200psi 13.8bar	150psi 10.3bar
14.0"–15.5" 350–400mm	13.0" 330mm	18.0" 457mm	200psi 13.8bar	150psi 10.3bar
17.0"–18.5" 425–475mm	16.0" 406mm	18.0" 457mm	200psi 13.8bar	150psi 10.3bar
20.0"–21.5" 500–550mm	19.0" 483mm	18.0" 457mm	200psi 13.8bar	150psi 10.3bar
23.0"–24.5" 575–625mm	22.0" 559mm	18.0" 457mm	200psi 13.8bar	150psi 10.3bar
26.0"–27.5" 650–700mm	25.0" 635mm	18.0" 457mm	200psi 13.8bar	150psi 10.3bar
29.0"–30.5" 750–800mm	28.0" 711mm	18.0" 457mm	200psi 13.8bar	150psi 10.3bar
32.0"–33.5" 800–850mm	31.0" 787mm	18.0" 457mm	200psi 13.8bar	150psi 10.3bar
35.0"–36.5" 900–950mm	34.0" 864mm	18.0" 457mm	200psi 13.8bar	150psi 10.3bar
38.0"–39.5" 950–1000mm	37.0" 940mm	18.0" 457mm	200psi 13.8bar	150psi 10.3bar

Note: Specifications are approximate. Other sizes available, contact us for more information.



HIGH PRESSURE TEST PLUGS

Our High Pressure Test Plugs feature:

- Multi-range sizing
- Water must be used to pressurise these plugs due to high working pressure
- Safety/over-inflation device
- Suitable for high pressure testing
- Available in various sizes
- Higher test pressures available
- Bypass or flow through options
- Can be used to blank off pipelines

PIPE TESTING ACCESSORIES



1. Hoses and Gauges



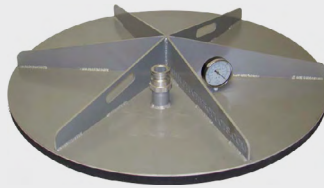
2. Low Pressure Air Test Kit



3. Critical Air Kits



4. Venturi Vacuum Pump



5. Vacuum Manhole Testing Plates



6. Vacuum Pump

1. HOSES AND GAUGE

All test plugs must be inflated and deflated remotely via a hose. Shore Hire supplies heavy-duty hand pumps, and hoses complete with an inflation gauge.

The inflation hose must be long enough to allow the operator to stay out of the danger zone, while the test plug is being inflated and deflated.

Lightweight, portable air tanks can also be supplied to assist in plug inflation.

2. LOW PRESSURE AIR TEST KIT, PUMP AND HOSE

Our low-pressure test kits are an easy-to-use option when testing water pipes for leaks. All kits come with an inflation hose, gauge, and triple test hose in a sturdy carry case. A manual hand pump is also provided for ease of use.

3. CRITICAL AIR KITS

These units use a 1.5m³ D size compressed air cylinder with a variable regulator to maintain the inflation pressure in the plug as the inflation pressure drops due to ambient air temperature changes. Critical air systems can be used with our range of test plugs.

Ensure you speak with a Shore Hire specialist for more details.

4. VENTURI VACUUM PUMP

For vacuum testing of pipelines and manholes, vacuum testing is safer than pressurised methods.

Our Venturi Vacuum Pumps are lightweight and easy to use; just connect to a compressor to operate. They do not need oil, gas, or belts; they are very low maintenance. They have more power, which means a test can be done in minutes.

Two sizes are available, 40 cfm and 27 cfm, depending on the volume to be tested.

5. VACUUM MANHOLE TESTING PLATES

This lightweight vacuum manhole testing plate is constructed from aluminium. The plate comes fitted with a calibrated gauge, and can be used with either a vacuum venturi or a vacuum test pump kit.

The testing plate is designed to seal most common circular manhole sizes.

6. VACUUM PUMP

Vacuum tests are not only the safest way to test, it also provides the most efficient, accurate, and cost effective method of testing new, existing, and rehabilitated manholes and pipelines.

Vacuum testing identifies infiltration and exfiltration problems. The vacuum testing system allows you to test manholes and pipelines within minutes.

Mounted on a Heavy-Duty Aluminium frame with all terrain wheels, the Shore Hire Vacuum Pump is suitable for on-site conditions.

PIPE TESTING ACCESSORIES



7. High Pressure Hydrostatic Testing Pump



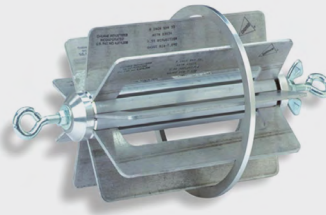
8. Inflation Pressure Alarm System



9. Inspection Camera



10. Mechanical Pipe Plugs (sale)



11. Deflection Gauges and Proving Rings



12. Layflat Hose

7. HIGH PRESSURE HYDROSTATIC TESTING PUMP

Can be used to fill pipelines.
Maximum flow of 44l/s.

For testing of water mains and high pressure rising mains up to 200psi.

Water tank allows direct mains pressure to be used as the water source.

8. INFLATION PRESSURE ALARM SYSTEM

This innovative alarm system is designed to aid in monitoring the inflation pressure when plugs are in use.

It can be set to various pressures to suit different plugs, allowing the alarm to activate when the inflation pressure drops below a certain value.

These units have both visual and audible warnings, powered by a 9v battery.

9. INSPECTION CAMERA

Shore Hire offers a versatile and expandable system which features industry standard recording and image capture, plus a host of innovative new features, including reporting software to produce professional reports to be handed to the customer.

10. MECHANICAL PIPE PLUGS

Mechanical plugs can be used in a variety of applications, including drain, vent, and waste testing and stack testing. They are great for small jobs with minimal back pressure.

Steel and plastic plugs are available for sale.

11. DEFLECTION GAUGES AND PROVING RINGS

Deflection Gauges and Proving Rings are used to test flexible PVC or plastic sewer pipes for 'out of roundness' or deflection after compaction.

This testing ensures that flexible piping has been properly bedded and backfilled to Australian Standards.

Specifications are generally determined by the relevant water authority.

12. LAYFLAT HOSE

Heavy-duty reliable layflat hoses can be used for all purposes, and come complete with male and female camlocks.