

TRISHORES



SHORE HIRE'S TRISHORES ARE A PROVEN LIGHTWEIGHT, QUICKLY INSTALLED, AND HIGH-LOAD CARRY PROPPING SYSTEM.

Trishore Props are a heavy load support system with a capacity of up to 178kN. The Trishore Props are best utilised when support is required at extended heights.

TRISHORE ADVANTAGES

- Able to support heavy loads at considerable height
- Fine adjustment by screw jacks
- Trishores braced in groups can support exceptionally heavy loads
- Lightweight sections for easy handling

TRISHORES

OUR TRISHORES SUPPORT HEAVY LOADS AT CONSIDERABLE HEIGHTS.

The working load limit given is for a free-standing prop without intermediate bracing. The prop load rating can be increased by providing adequate bracing at intermediate points, and a qualified engineer must calculate this. To be effective, the bracing must be in two directions, preferably at right angles. In every case, some cross-bracing is essential for erection and stabilising against any lateral force. Bracing is to be correctly fitted to Australian Standards requirements.

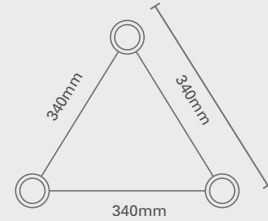
FEATURES

- Intermediate sections available in three different lengths
- Domed bearing plate to ensure concentric loading

TRISHORE HEIGHTS



TRISHORE OUTSIDE DIMENSIONS



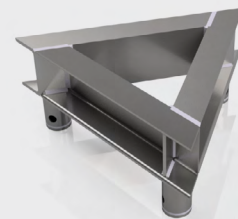
TRISHORE COMPONENTS



Base Jack



Head Jack



Flat Head Piece

TRISHORE SECTION/COMPONENT SPECIFICATIONS

Component	Length	Weight
Intermediate Section	1250mm	28kg
Intermediate Section	1500mm	33kg
Intermediate Section	2000mm	41kg
Flat Head Piece	170mm	14kg
Base Jack	From 365–640mm	34kg
Head Jack	From 380–670mm	32kg

Note: Specifications are approximate.

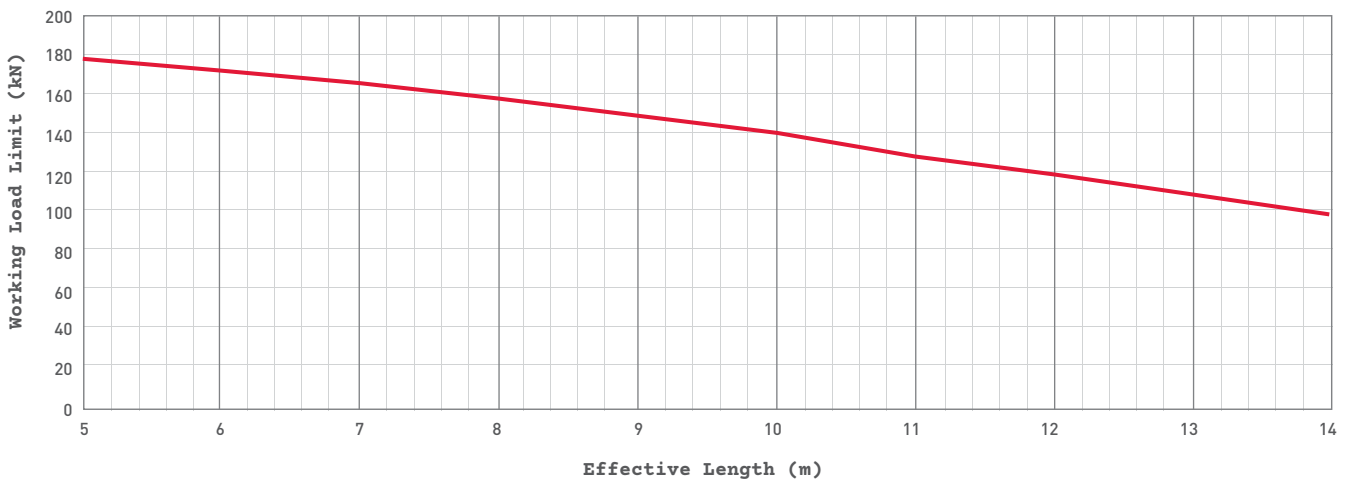
TRISHORES



SUPPORT HEAVY LOADS AT CONSIDERABLE HEIGHTS.

The working load limit given is for a free standing prop without intermediate bracing. Prop load rating can be increased by providing adequate bracing at intermediate points (to be calculated by a qualified engineer). To be effective, the bracing must be in two directions, preferably at right angles. In every case, some cross bracing is essential for erection and stabilising against any lateral force. Bracing is to be correctly fitted to Australian Standards requirements.

Tri-Shore Vertical Working Load Limit



TRISHORES

TRISHORE SPECIFICATIONS

Overall Height of Trishore with Base Jack and Flat Head Piece		Number of Intermediate Sections Required			Overall Height of Trishore with Base Jack and Head Jack	
m	kg	1250	1500	2000	m	kg
0.43–0.70	48				1.00–1.15	66
1.68–1.95	76	1			1.85–2.40	94
1.93–2.20	80		1		2.10–2.65	97
2.43–2.70	89			1	2.60–3.15	107
2.93–3.20	104	2			3.10–3.65	122
3.18–3.45	109	1	1		3.35–3.90	127
3.43–3.70	113		2		3.60–4.15	131
3.68–3.95	117	1		1	3.85–4.40	135
3.93–4.20	122		1	1	4.10–4.65	140
4.18–4.45	132	3			4.35–4.90	150
4.43–4.70	130			2	4.60–5.15	148
4.68–4.95	141	1	2		4.85–5.40	159
4.93–5.20	145	2		1	5.10–5.65	163
5.18–5.45	150	1	1	1	5.35–5.90	168
5.43–5.70	154		2	1	5.60–6.15	172
5.68–5.95	158	1		2	5.85–6.40	177
5.93–6.20	163		1	2	6.10–6.65	181
6.18–6.45	173	3		1	6.35–6.90	191
6.43–6.70	171			3	6.60–7.15	190
6.68–6.95	182	1	2	1	6.85–7.40	200
6.93–7.20	186	2		2	7.10–7.65	205
7.18–7.45	191	1	1	2	7.35–7.90	209
7.43–7.70	195		2	2	7.60–8.15	214
7.68–7.95	200	1		3	7.85–8.40	218
7.93–8.20	204		1	3	8.10–8.65	222
8.18–8.45	215	3		2	8.35–8.90	233
8.43–8.70	213			4	8.60–9.15	231
8.68–8.95	224	1	2	2	8.85–9.40	242
8.93–9.20	228	2		3	9.10–9.45	246
9.18–9.45	232	1	1	3	9.35–9.90	251
9.43–9.70	236		2	3	9.0–10.145	255
9.68–9.95	241	1		4	9.0–10.145	269
9.93–10.20	245		1	4	10.10–10.65	264
10.18–10.45	256	3		3	10.35–10.90	273
10.43–10.70	254			5	10.60–11.15	272
10.68–10.95	265	1	2	3	10.85–11.40	283
10.93–11.20	269	2		4	11.10–11.65	287
11.18–11.45	273	1	1	4	11.35–11.90	292
11.43–11.70	278		2	4	11.60–12.15	296
11.68–11.95	282	1		5	11.85–12.40	300
11.93–12.20	286		1	5	12.10–12.65	305

Note: Specifications are approximate.