

TITAN PROPS



OUR TITAN PROPS CAN HOLD EIGHT TIMES THE LOAD FOR THE SAME WEIGHT OF ITS STEEL COUNTERPART.

Due to its lightweight material it is capable of supporting eight times the load for the same weight of its steel counterpart. This extruded aluminium prop is easily handled in awkward locations and ideally suited for tight and difficult access applications. They have a phenomenal 10t working load limit and are made of high grade light alloy for easy handling.

TITAN PROPS



TITAN PROPS (ALUMINIUM) WORKING LOAD LIMIT

Titan Props	Description Size		
	No.2	No.4	No.6
Range	1.7–2.9m	2.9–4.1m	4.3–5.5m
Weight	17kg	21kg	28kg

TITAN PROP WLL – FORMWORK

Extensions (m)	No.2 (kN)	No.4 (kN)	No.6 (kN)
1.70	100.0		
1.90	100.0		
2.10	100.0		
2.30	100.0		
2.50	88.0		
2.70	57.0	(kN)	
2.90	42.0	94.9	
3.10		79.9	
3.30		70.0	
3.50		62.4	
3.70		55.0	
3.90		50.0	
4.10		41.0	(kN)
4.30			42.0
4.50			39.0
4.70			37.1
4.90			33.0
5.10			31.0
5.30			28.0
5.50			27.0

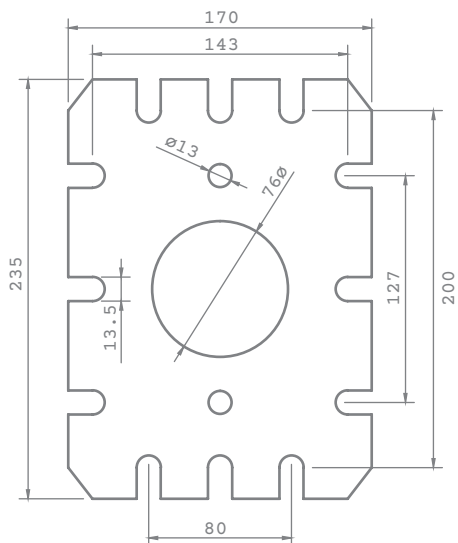
TITAN PROP WLL – BACKPROPPING

Extensions (m)	No.2 (kN)	No.4 (kN)	No.6 (kN)
1.70	128.0		
1.90	128.0		
2.10	128.0		
2.30	128.0		
2.50	115.7		
2.70	106.0	(kN)	
2.90	89.1	128.0	
3.10		128.0	
3.30		126.6	
3.50		108.1	
3.70		84.9	
3.90		72.5	
4.10		60.5	(kN)
4.30			89.3
4.50			80.5
4.70			71.6
4.90			64.4
5.10			57.1
5.30			49.5
5.50			41.9

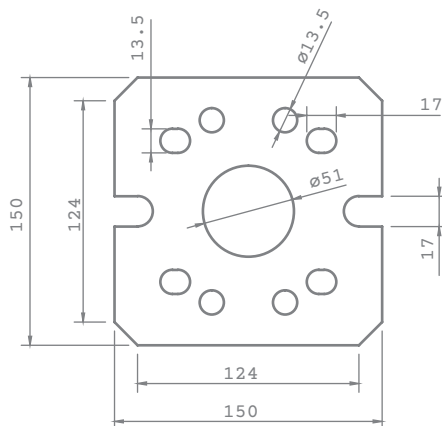
Note: Specifications are approximate.

TITAN PROPS

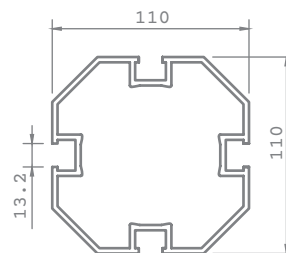
THE MOST VERSATILE ALUMINIUM PROP AVAILABLE CAN ALSO BE JOINED AND USED IN COMBINATION FOR LONGER LENGTHS.



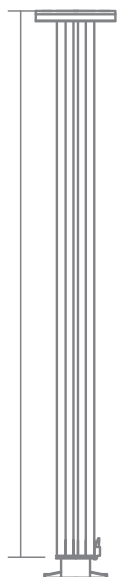
Headplate Detail



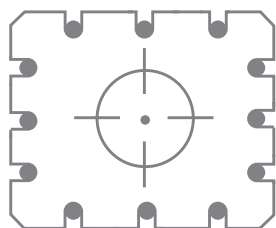
Baseplate Detail



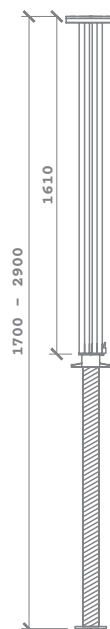
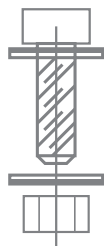
Section Detail



Extension Sections
Available
0.5m - (4.3kg)
1.0m - (5.7kg)



Joint Information
Minimum 8 x M12 x 35mm 8.8 grade bolts
with 16 x 13mm washers



Titan No. 2



Titan No. 4



Titan No. 6

TITAN PROPS – ACCESSORIES



TITAN FRAME SPECIFICATIONS

Height	Closed	Open	Increment Extension
504mm	900mm	1500mm	300mm

Titan Frame