

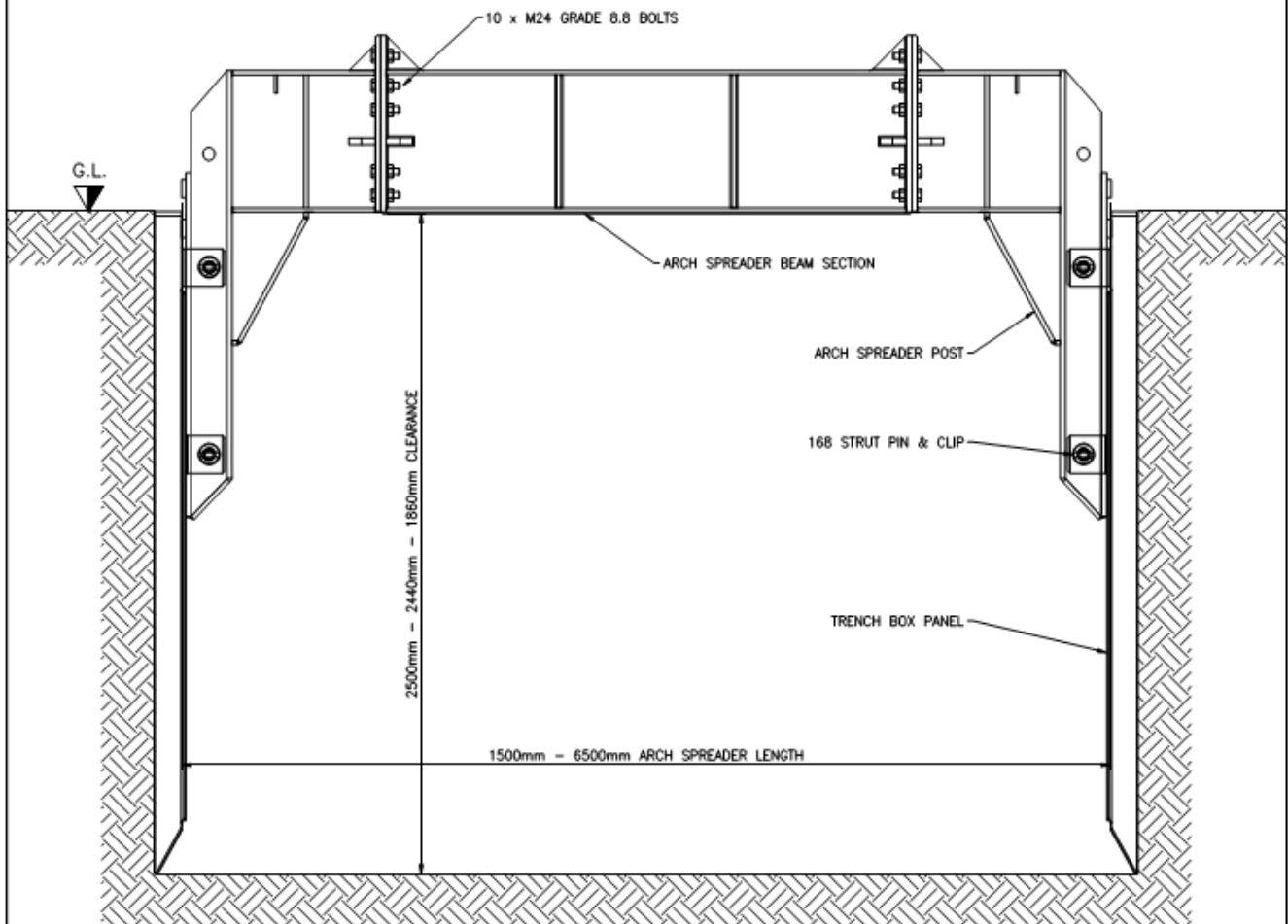
TECH DATA REF: SHORING

PRODUCT: ARCH SPREADERS
REFERENCE: TDS08-PAGE 1

shorehire.

Shore Hire Pty. Ltd.
 PO Box CP449
 354 Edgar Street
 Condell Park
 NSW 2200
 Tel: 02 8708 1200
 Fax: 02 8708 1222
 Email: info@shorehire.com.au
 Web: www.shorehire.com.au

TECHNICAL DATA



Notes	Compatible Trench Boxes	Arch Spreader Components
<ol style="list-style-type: none"> 1. Arch Spreaders can be used with 4, 6 & 7m trench boxes. 2. Quick pin lock installation to trench box panels. 3. Maximum clearance from base of excavation to underside of Arch Spreader of 2.5m (dependent on type of trench box to be used) 4. Maximum Arch Spreader length = 6.5 m 5. Arch Spreaders are assembled by Shore Hire at a Shore Hire branch. 6. For more information on Shore Hire trench boxes, please see the technical data sheets, <ul style="list-style-type: none"> • Steel Trench Boxes - TDS01 • HD Aluminium Trench Boxes - TDS02. 	<ul style="list-style-type: none"> • 4M-60 Steel Trench Box (lower box, 2.5m clearance, 1326 kg/panel) • 6M-40 Steel Trench Box (lower box, 2.5m clearance, 2388 kg/panel) • 4.2 HD Aluminium Trench Box (knife edge, 2.44m clearance, 1070 kg/panel) (flat bottom, 1.86m clearance, 850 kg/panel) • 6.2 HD Aluminium Trench Box (knife edge, 2.44m clearance, 1476 kg/panel) (flat bottom, 1.86m clearance, 1366 kg/panel) • 7.2 HD Aluminium Trench Box (knife edge, 2.44m clearance, 1570 kg/panel) (flat bottom, 1.86m clearance, 1454 kg/panel) 	<ul style="list-style-type: none"> • 750mm End Post - 282 kg • 2500mm Beam Section - 324 kg • 2000mm Beam Section - 274 kg • 1500mm Beam Section - 220 kg • 1000mm Beam Section - 163 kg • 500mm Beam Section - 94 kg • 250mm Beam Section - 67 kg • M24 Bolt & Nut - 0.54 kg (10 bolts per connection, 5.4 kg/connection) • 168 Strut Pin & Pin Clip - 2.4 kg

TECH DATA REF: SHORING

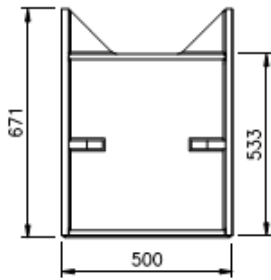
PRODUCT: ARCH SPREADERS
REFERENCE: TDS08-PAGE 2

shorehire.

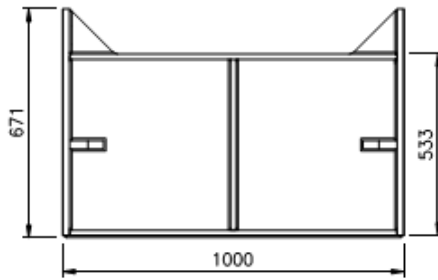
Shore Hire Pty. Ltd.
PO Box CP449
354 Edgar Street
Condell Park
NSW 2200
Tel: 02 8708 1200
Fax: 02 8708 1222
Email: info@shorehire.com.au
Web: www.shorehire.com.au

TECHNICAL DATA

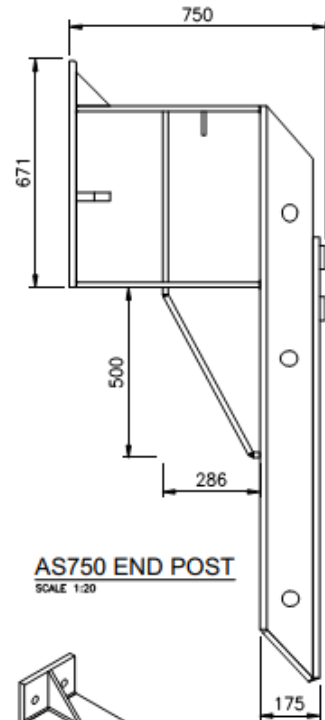
ARCH SPREADER COMPONENTS



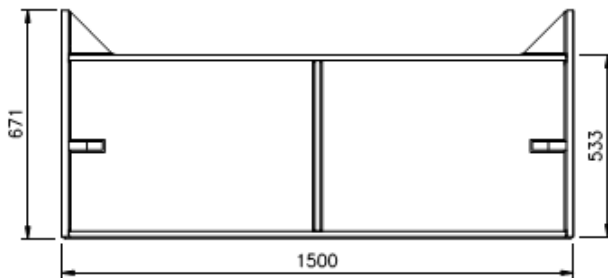
AS500 BEAM
SCALE 1:20



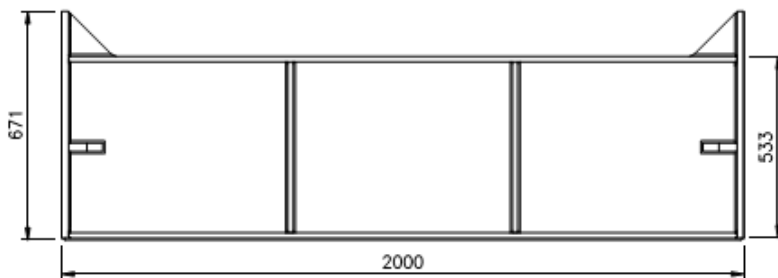
AS1000 BEAM
SCALE 1:20



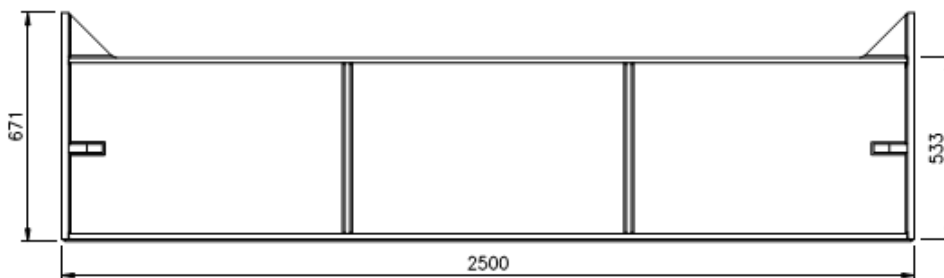
AS750 END POST
SCALE 1:20



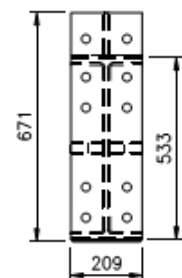
AS1500 BEAM
SCALE 1:20



AS2000 BEAM
SCALE 1:20



AS2500 BEAM
SCALE 1:20



END VIEW
SCALE 1:20