

**PRODUCT:** SHORE PROP 200  
**REFERENCE:** TD-PR-14

**shorehire.**

Shore Hire Pty. Ltd.  
PO Box CP449  
354 Edgar Street  
Condell Park  
NSW 2200  
Tel: 02 8708 1200  
Fax: 02 8708 1222  
Email: [info@shorehire.com.au](mailto:info@shorehire.com.au)  
Web: [www.shorehire.com.au](http://www.shorehire.com.au)

# TECHNICAL DATA

## Description

The Shore Prop 200, is an integral part of our modular propping range. This propping system provides great adaptability and can be combined with various other products from Shore Hire. The Shore Prop 200 system is a remarkably flexible and robust solution for propping in both horizontal and vertical applications, meeting the rigorous demands of Australian Job sites.

With its modular components and adjustable foot jacks, Shore Hire can customise an arrangement to match the specific dimensions of your project. Using the Shore Prop 200 temporary propping system, customers can benefit from a perfect balance of load-bearing capacity and flexibility. It seamlessly integrates with the Shore Prop 100, Shore Prop 400, and Shore Prop 1000 modular propping systems, along with several other products available from Shore Hire.

For your peace of mind, Shore Hire's team of skilled engineers and on-site riggers are fully equipped to handle the design and installation of temporary works involving this equipment. Rest assured that your next project will be in capable hands.

This lightweight, modular shoring and propping system strikes a balance between minimizing component weight to reduce manual handling risk and maintaining robustness and load capacity. It is well-suited for use in busy construction environments with limited space.



Shore Prop 200 Example

**PRODUCT:** SHORE PROP 200  
**REFERENCE:** TD-PR-14

**shorehire.**

Shore Hire Pty. Ltd.  
 PO Box CP449  
 354 Edgar Street  
 Condell Park  
 NSW 2200  
 Tel: 02 8708 1200  
 Fax: 02 8708 1222  
 Email: info@shorehire.com.au  
 Web: www.shorehire.com.au

# TECHNICAL DATA

## Shore Prop 200 Features and Benefits

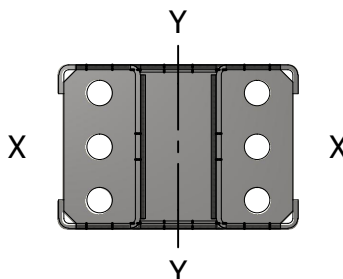
1. Load capacity of up to 20 tonnes.
2. Compact 182mm x 122mm section.
3. Section weight 20.8 kg/m. Refer to individual section weights.
4. Modular system offers various sizes, adaptable to diverse propping needs.
5. Connections at joints are typically with minimum 4 x M18 Grade 8.8 nuts, bolts and washers.
6. Beams have the ability to resist load in bending, compression, tension, shear and a combination of these actions.
7. Interchangeable with the Shore Prop 1000, Shore Prop 400 and Shore Prop 100 range.
8. 200mm adjustment in prop configurations via the Shore Prop 200 Jack.
9. General plates for M20 bolt connection of push pull prop bracing for added flexibility.

## Technical Specifications

Manufactured in compliance with AS/NZS 1170 Structural Design Actions and AS 4100 Steel Structures, the Shore Prop 200 offer customers the assurance of the highest manufacturing standards when selecting temporary works equipment.

SHORE PROP 200 PROPERTIES	
Gross Cross Sectional Area (Ag)	2238 mm <sup>2</sup>
Net Cross sectional Area (An)	1746 mm <sup>2</sup>
Moment of Inertia (Ixx)	5.8x10 <sup>6</sup> mm <sup>4</sup>
Moment of Inertia (Iyy)	7.7x10 <sup>6</sup> mm <sup>4</sup>
Radius of Gyration (rxx)	51.0 mm
Radius of Gyration (ryy)	58.5 mm
Elastic Modulus (Zxx)	89.4x10 <sup>3</sup> mm <sup>3</sup>
Elastic Modulus (Zyy)	80.5x10 <sup>3</sup> mm <sup>3</sup>
Young Modulus (E)	200x10 <sup>3</sup> MPa
Minimum Yield Stress (fy)	340 MPa
Section Shear Capacity (V)	76.8 kN.m
Maximum Bending Moment Section Capacity (Mx)	18.2 kN.m
Maximum Bending Moment Section Capacity (My)	16.4 kN.m
Maximum Joint Bending Moment Capacity (Mxx)*	14.0 kN.m (4 corner bolt connection)
Maximum Joint Bending Moment Capacity (Myy)*	17.8 kN.m (4 corner bolt connection)

\* End plates are connected with 4 x M20x60 mm grade 8.8 N.B.W. All capacities are calculated in accordance with Australian Standards AS 4600 and AS 4100.



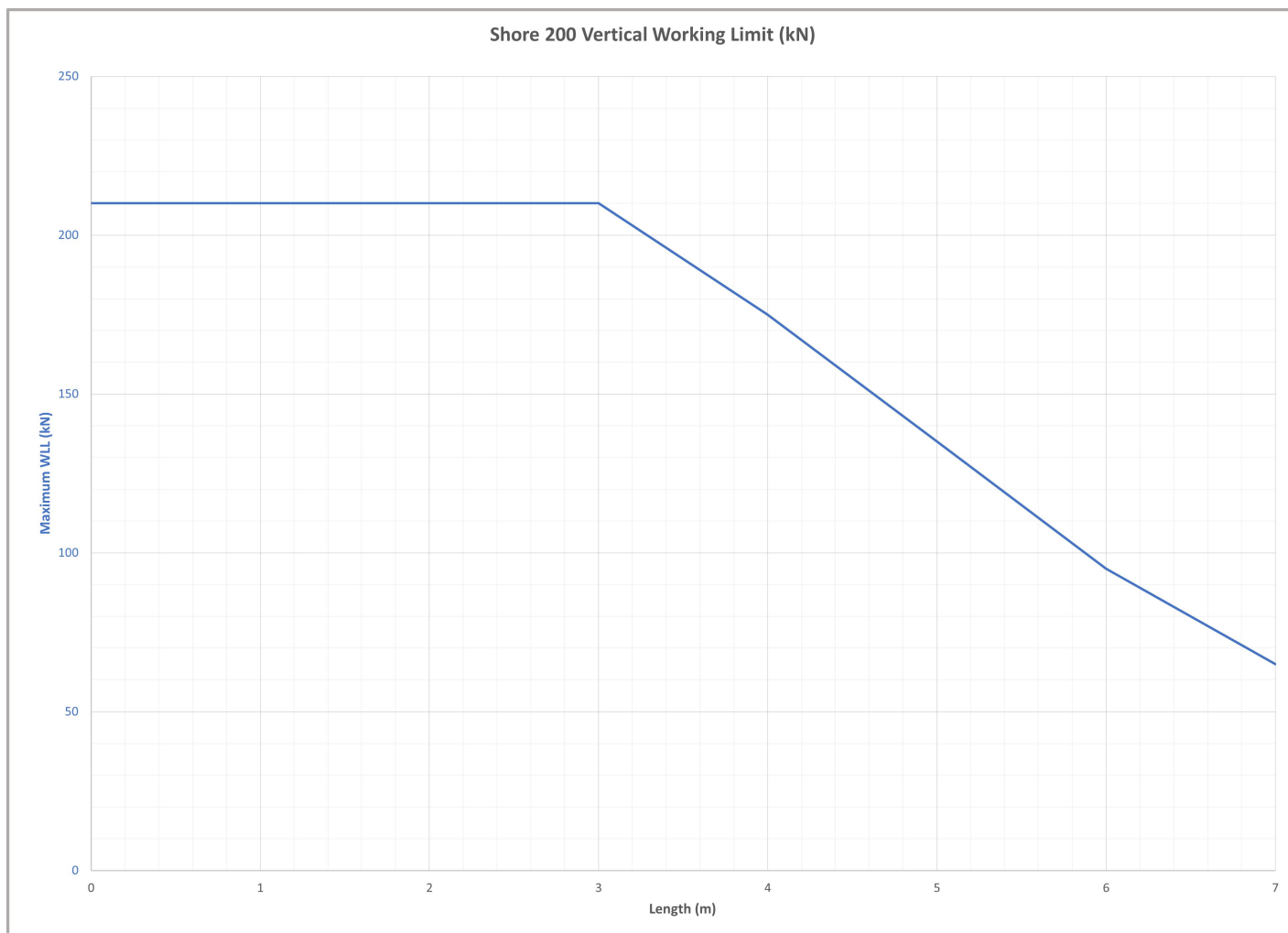
Section Coordinate Frame

**PRODUCT:** SHORE PROP 200**REFERENCE:** TD-PR-14**shorehire.**

Shore Hire Pty. Ltd.  
PO Box CP449  
354 Edgar Street  
Condell Park  
NSW 2200  
Tel: 02 8708 1200  
Fax: 02 8708 1222  
Email: [info@shorehire.com.au](mailto:info@shorehire.com.au)  
Web: [www.shorehire.com.au](http://www.shorehire.com.au)

# TECHNICAL DATA

## Safe Working Load for Shore Prop 200 (kN)



The working load limit capacity is based on the following design principles:

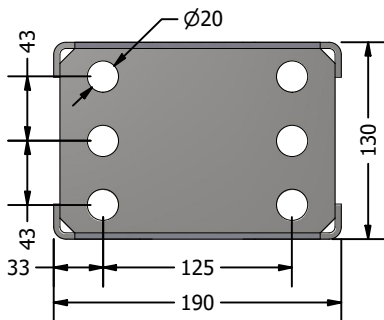
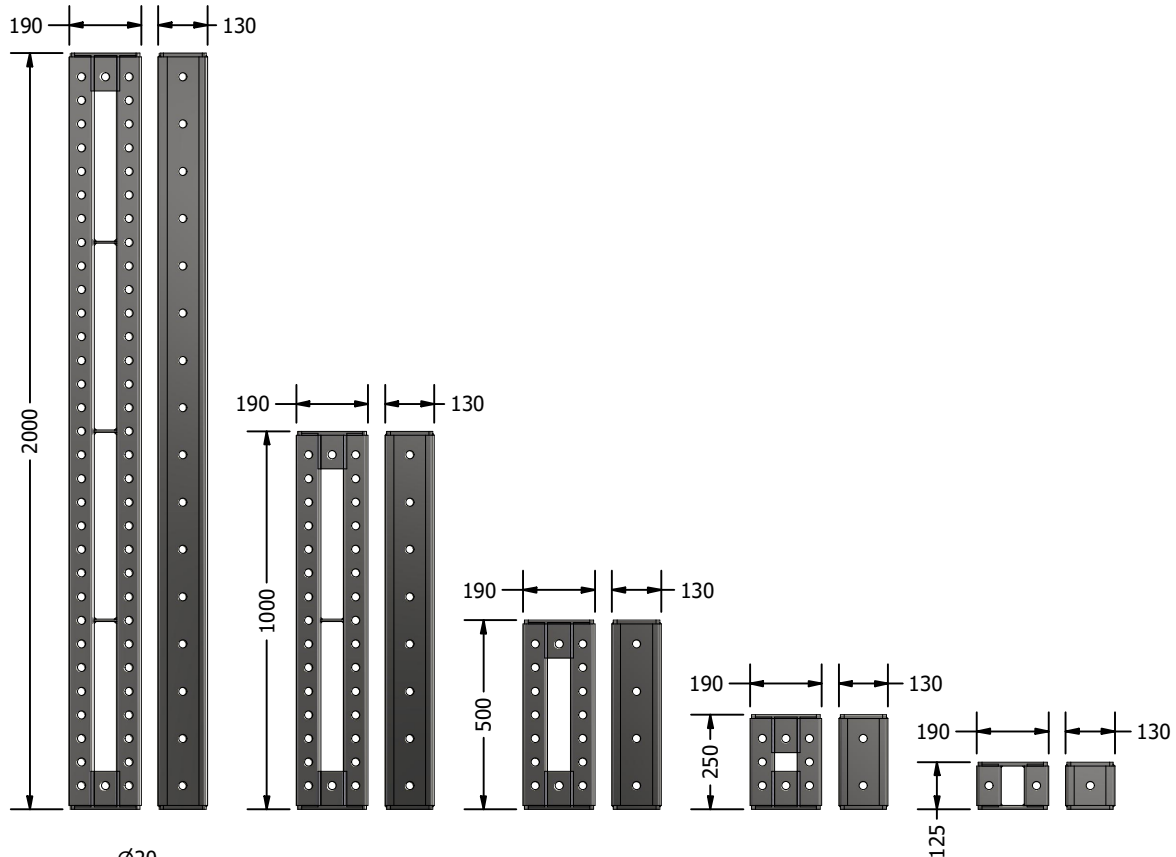
- A Shore Prop 200 Jack is positioned at the base and both ends are restrained laterally.
- The working load limit values are the limit state design capacity values divided by a load factor of 1.5.
- An eccentricity of axial load of  $L/200$  has been applied around the minor axis.
- All assembly bolts are fully tensioned.
- Intermediate capacities for various effective lengths can be interpolated from the chart.

**PRODUCT:** SHORE PROP 200**REFERENCE:** TD-PR-14**shorehire.**

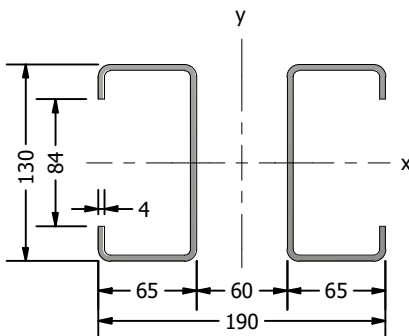
Shore Hire Pty. Ltd.  
 PO Box CP449  
 354 Edgar Street  
 Condell Park  
 NSW 2200  
 Tel: 02 8708 1200  
 Fax: 02 8708 1222  
 Email: info@shorehire.com.au  
 Web: www.shorehire.com.au

# TECHNICAL DATA

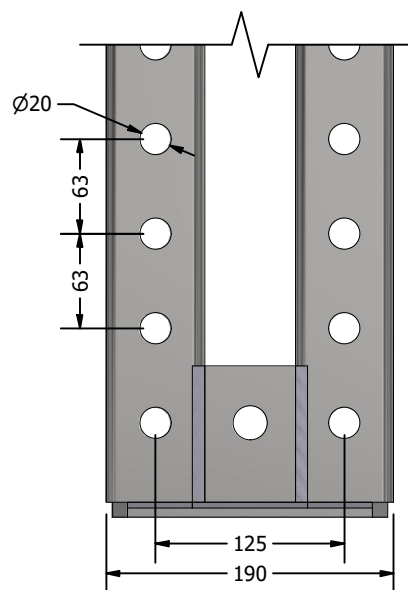
## Shore Prop 200 Beam Section Details



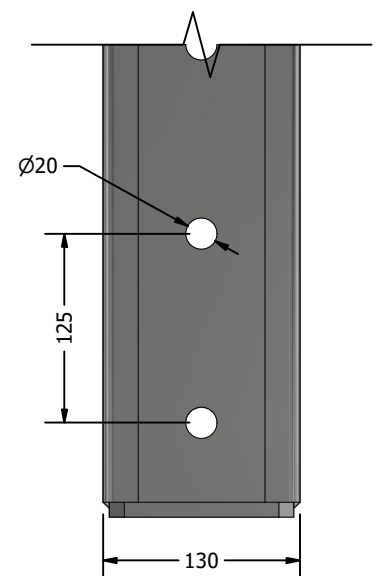
**END VIEW**  
 SCALE 1:5



**SECTION VIEW**  
 SCALE 1:5



**FRONT VIEW**  
 SCALE 1:5

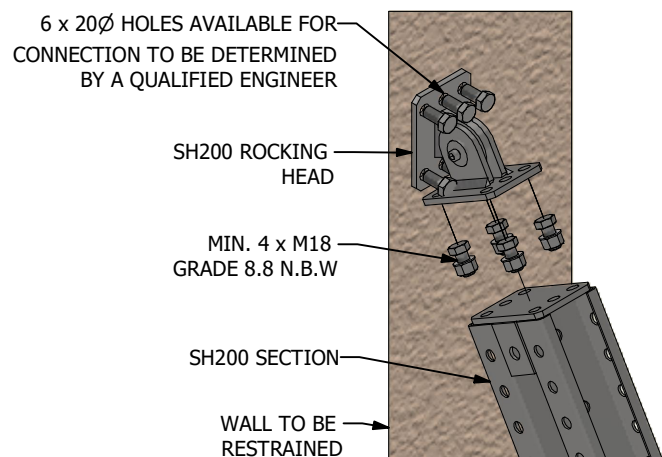
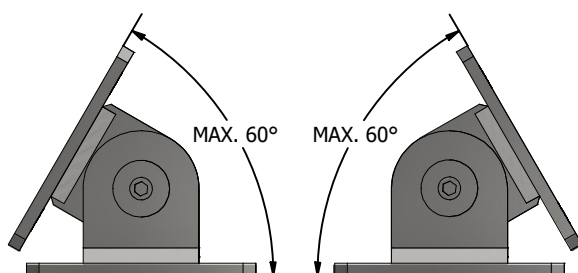
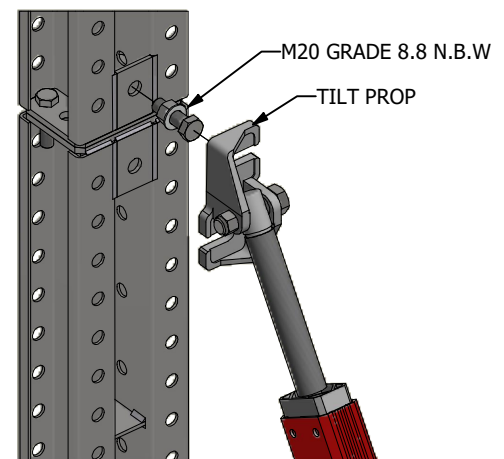
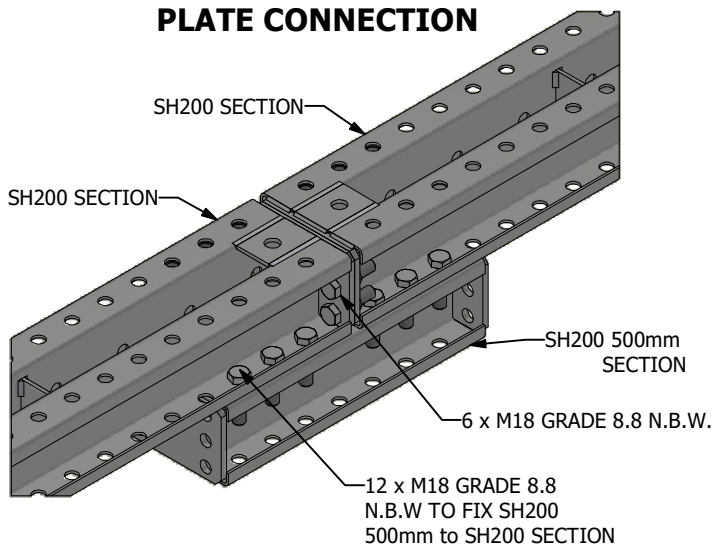
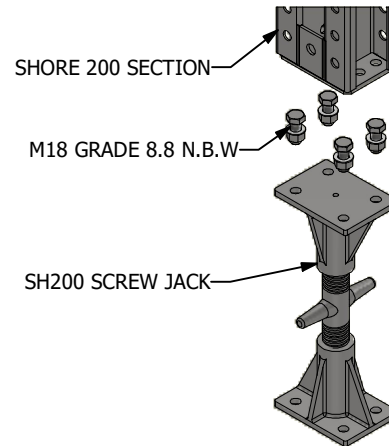
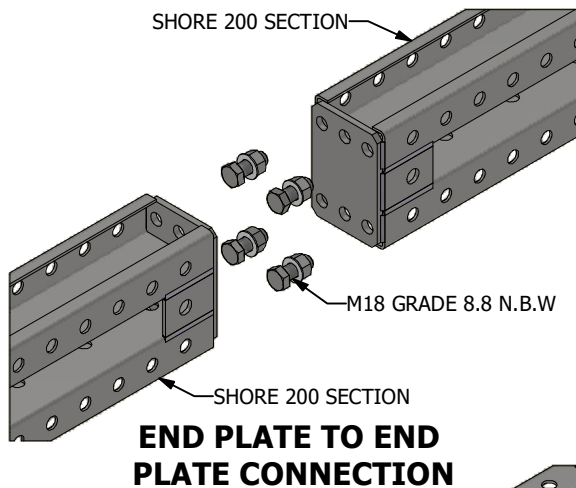


**LATERAL VIEW**  
 SCALE 1:5

**PRODUCT:** SHORE PROP 200**REFERENCE:** TD-PR-14**shorehire.**

Shore Hire Pty. Ltd.  
PO Box CP449  
354 Edgar Street  
Condell Park  
NSW 2200  
Tel: 02 8708 1200  
Fax: 02 8708 1222  
Email: info@shorehire.com.au  
Web: www.shorehire.com.au

# TECHNICAL DATA

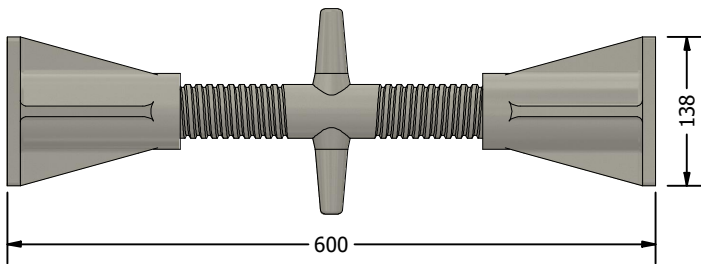


**PRODUCT:** SHORE PROP 200**REFERENCE:** TD-PR-14**shorehire.**

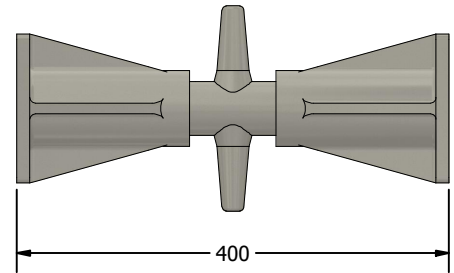
Shore Hire Pty. Ltd.  
 PO Box CP449  
 354 Edgar Street  
 Condell Park  
 NSW 2200  
 Tel: 02 8708 1200  
 Fax: 02 8708 1222  
 Email: info@shorehire.com.au  
 Web: www.shorehire.com.au

# TECHNICAL DATA

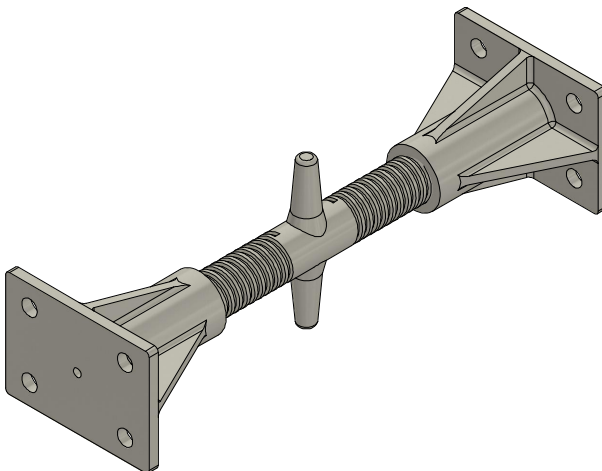
## Shore Prop 200 Screw Jack:



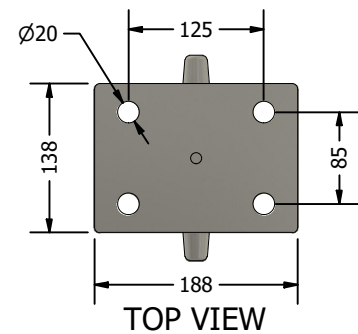
**ELEVATION VIEW**  
 600mm LONG (Fully Open)



**ELEVATION VIEW**  
 400mm LONG (Fully Closed)



**ISOMETRIC VIEW**



**TOP VIEW**

SHORE PROP 200 EXTENSIONS RANGE IN LENGTH FROM 0.125m TO 2.0m END TO END DIMENSION AND ARE CONNECTED TO EACH OTHER VIA 4 OR 6 No. M18 GRADE 8.8 BOLTS WITH NUTS AND WASHERS, TO BE DETERMINED BY A QUALIFIED ENGINEER.

PRODUCT DESCRIPTION	WEIGHT (kg)
SHORE PROP 200 - 125mm EXTENSION	5.7
SHORE PROP 200 - 250mm EXTENSION	8.4
SHORE PROP 200 - 500mm EXTENSION	13.1
SHORE PROP 200 - 1000mm EXTENSION	22.2
SHORE PROP 200 - 2000mm EXTENSION	40.1
SHORE PROP 200 - SCREW JACK	15.8
SHORE PROP 200 - ROCKING HEAD	5.9



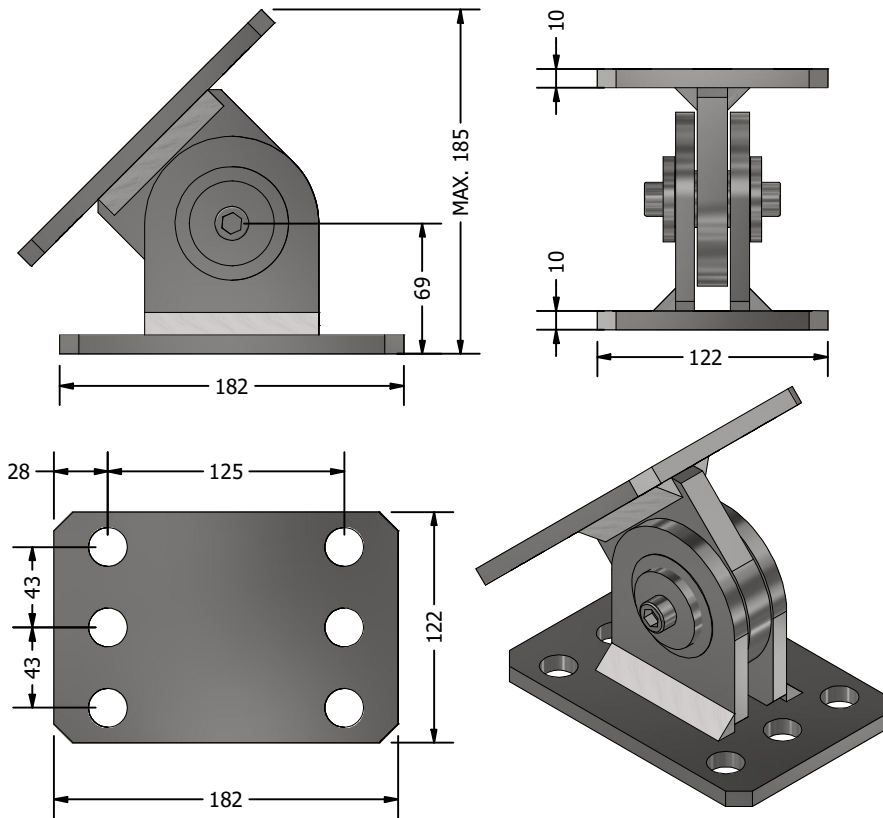
**PRODUCT:** SHORE PROP 200**REFERENCE:** TD-PR-14**shorehire.**

Shore Hire Pty. Ltd.  
 PO Box CP449  
 354 Edgar Street  
 Condell Park  
 NSW 2200  
 Tel: 02 8708 1200  
 Fax: 02 8708 1222  
 Email: info@shorehire.com.au  
 Web: www.shorehire.com.au

# TECHNICAL DATA

## SHORE PROP 200 ROCKING HEAD (6 kg)

1. All dimensions in mm. U.N.O.
2. Steel material to be minimum grade 350 in accordance with AS 3769.
3. Section steelwork is to be hot dipped galvanised to AS 4680:2600.
4. All hole openings are +/- 0.125 mm. U.N.O.



## SHORE PROP 200 BOLTS, NUTS AND WASHERS (0.25 kg)

1. All dimensions in mm. U.N.O.
2. Bolts to be min grade 8.8 and manufactured in accordance with AS 1110.
3. Nuts to be min grade 8.8 and manufactured in accordance with AS 1112.
4. Nut, bolts and washers to be assembled in accordance with AS 1252.

